



BATTERY BUDDY

If safety and productivity are important to your operation, the Battery Buddy is the ideal solution for manual or gantry-based lift out applications. Assembled from the highest-grade structural aluminum, the Battery Buddy is impervious to acid and dry rot and will not fatigue and potentially weaken like other beams.

Rated at a lift capacity of 6,000 lbs and certified for even the largest batteries, the Battery Bull has been independently tested for destruction and achieved a failure point consistently in excess of 30,000 lbs which is more than 5 times its rated capacity.

With our unique single-handed latch, the operator can control, direct and release the battery without ever having to reach across, thus minimizing crushing or acid exposure risks. The optional extension handle is the industry's first positive lock extending handle, designed to keep the operator well away from danger. Finished in 3/16" (5mm) non-conductive and acid-resistant coating, you can be assured the Battery Buddy will be performing for years to come.

GET IN TOUCH

info@carneybatteryhandling.com
www.carneybatteryhandling.com

Tel: 1.905.564.0303
Toll free: 1.866.THE.BULL

2A - 14 Reagan Road
Brampton Ontario L7A 1B9

BATTERY BUDDY

Features and Benefits

- Engineered to Last

Constructed from structural-grade aluminum alloy and finished with a 3/16 (5mm) coating of non-conductive acid resistant plastisol ensures product longevity

- Two Standard Sizes

Select a 44" or 48" long battery buddy to safely cover every size and shape of battery in your fleet

- Lightweight & Durable

Just 49lbs the battery buddy is lightweight, ideal for easy handling and storage but with a capacity of 60,000 lbs

- Fully Adjustable

Saddle blocks with a solid hinged cover allow for fast, secure and safe width adjustment from 21" - 43" (533mm-1,092mm) or 25" - 47" (635mm - 1,194mm)

- Flexible Battery Pick-up

Options for two or four point battery connection with safety hooks, allows for safe and easy pick-up of any battery box configuration, including those with covers

- Smooth & Safe Operation

User friendly, single handed control lever, allows for a safe, quick connection

- Robust Safety Latches

Heavy duty 1/4" plate safety latch swivels around each battery lifting eye to prevent any accidental disconnection

- Industry Leading

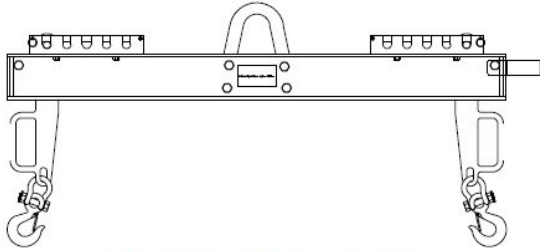
The battery buddy exceeds all OSHA regulations and is backed by a 3 year replacement warranty

Available Options

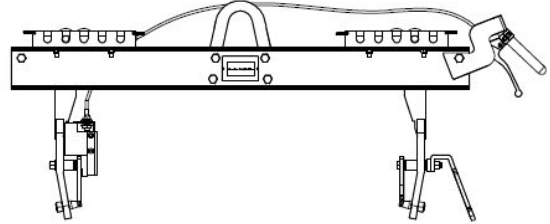
OPTIONS
2 or 4-point pick-up safety chains
FA-3T forklift attachment and HE-3T lifting hook extension system
Custom sizes and configurations available
3 year warranty
36" retractable extension handle

BATTERY BUDDY

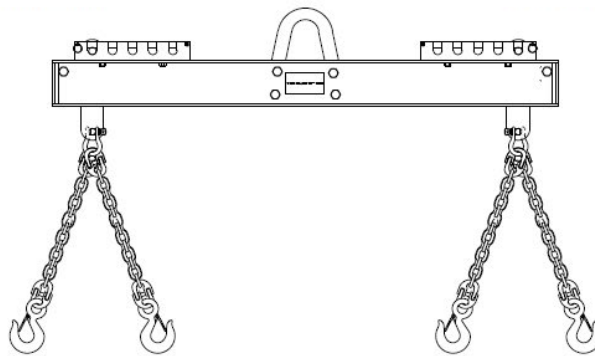
MODELS



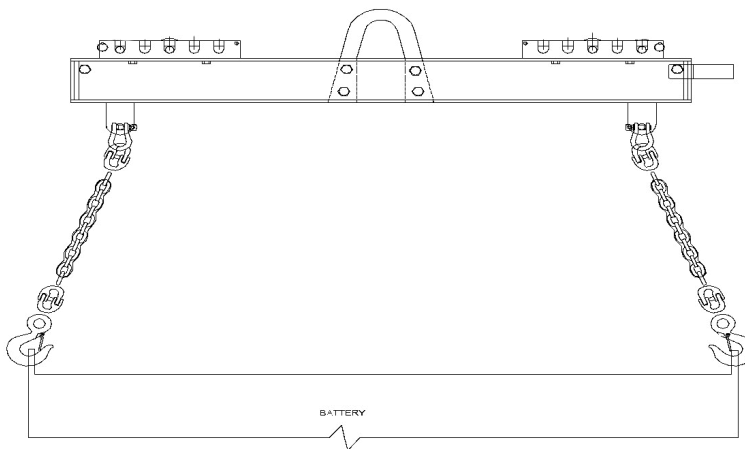
BBYS-2-44-SH



BBYS-2-44-SS



BBYS-4-44-SH



BBYS-2-44-SH
With chain point pickups

BATTERY BUDDY

SPECIFICATIONS

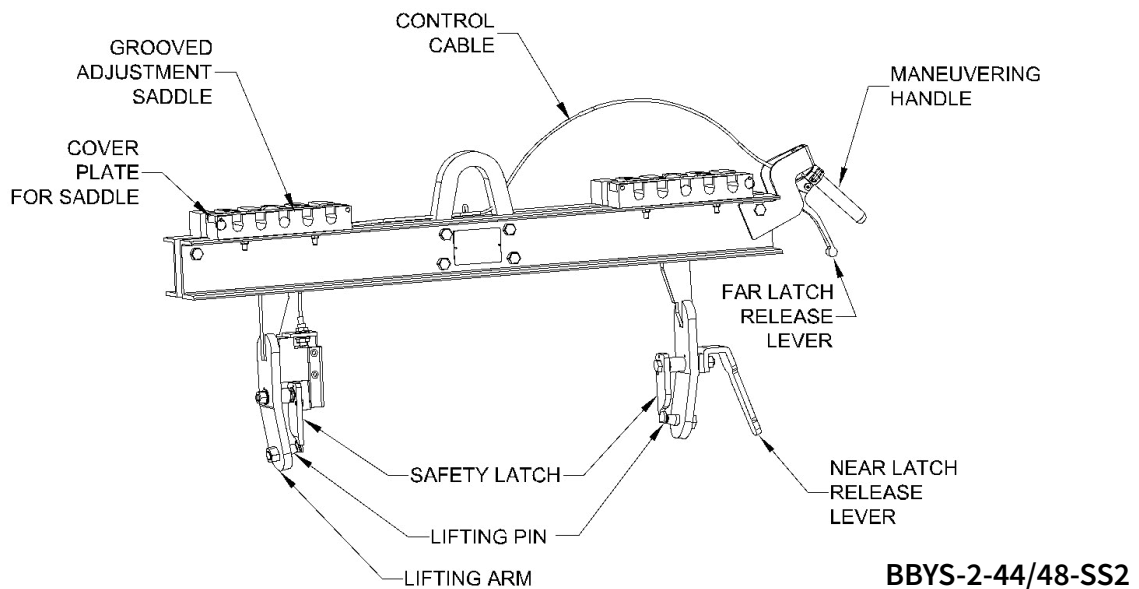
GENERAL SPECIFICATIONS

DESCRIPTION		STANDARD	METRIC
1	Maximum battery carrying capacity (all models)	6,000 lbs	2,727 kg
2	Ultimate strength (all models)	30,000 lbs	13,636 kg
3	Structural material (all models)	High strength structural aluminum alloy completely insulated with 3/16" thick specially formulated, non-conductive, acid-resistant coating.	

DIMENSIONAL DATA

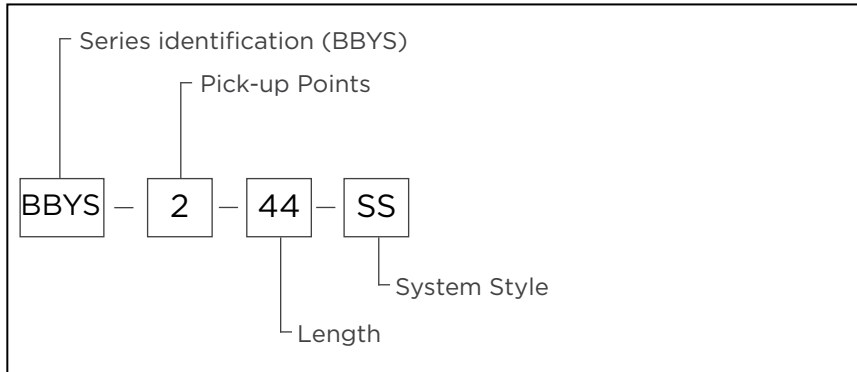
DESCRIPTION		STANDARD	METRIC
4	Overall length	47-55"	1194 or 1295 mm
5	Overall width	5"	127 mm
6	Overall height (+ hook mechanism)	8 1/2"	216 mm
7	Weight (approx) BBYS-4-44-SH	54 lbs	24.5 kg
8	BBYS-4-48-SH	56 lbs	25.5 kg
9	BBYS-2-44-SH	50 lbs	22.7 kg
10	BBYS-2-48-SH	52 lbs	23.6 kg

DIAGRAM



Model/Part Number Breakdown

Example: BBYS-2-44-SS



BBYS - Spring loaded latch



BBYS - handle extension

GET IN TOUCH

info@carneybatteryhandling.com
www.carneybatteryhandling.com

Tel: 1.905.564.0303
Toll free: 1.866.THE.BULL

Due to continuous product improvements, specifications are subject to change without notice. Some systems and features shown may be optional at extra cost.

CBH_BATTERYBUDDY_NA_V01