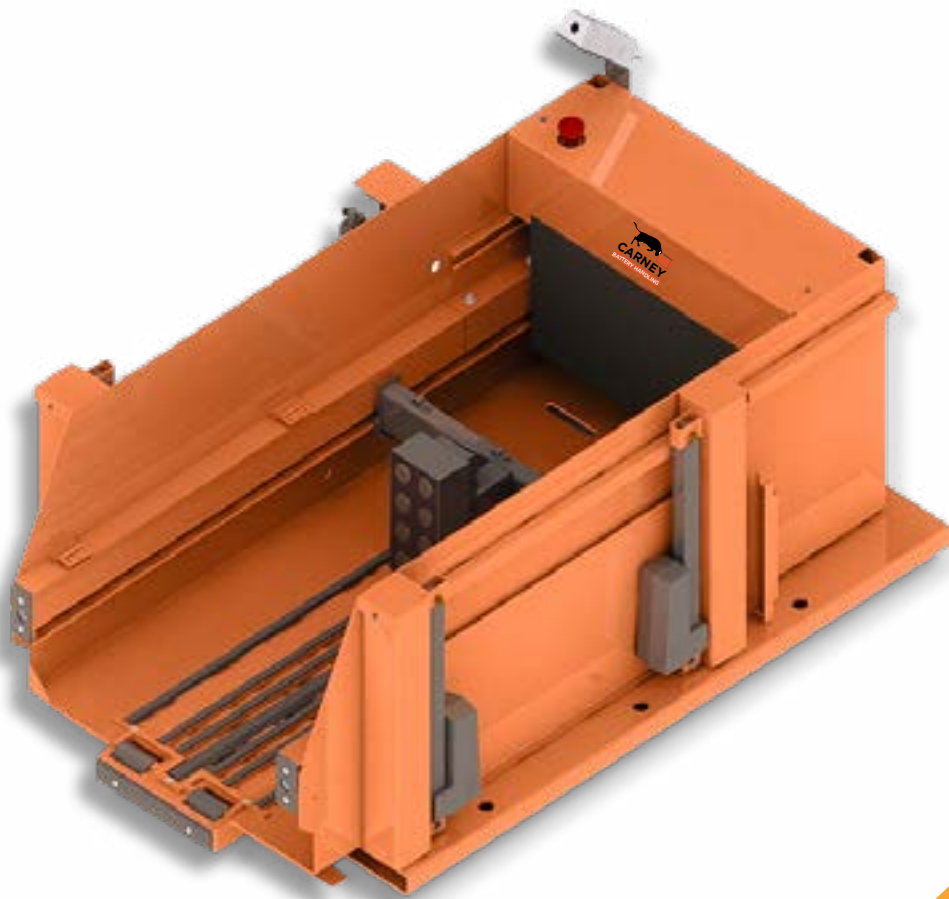




# UTE

## UNIVERSAL TUGGER ELECTRIC

TRULY UNIVERSAL BATTERY CHANGING





**UTE**



**UNIVERSAL BATTERY  
TUGGER ELECTRIC**

---

The UNI-Tugger is the latest addition to our globally recognized BTE series. It is designed to accommodate all popular battery sizes and roll-out heights and is equipped with our signature electromagnet; perfect for low-volume, high efficiency battery changing. The UNI-Tugger also has built-in safety features, including a linear actuator system to supplement the lifting range.

All lift and extraction functions are electrically powered by any suitable host truck. The logical push-button controls simplify operation fulfilling the industries need for a “flexible” mobile battery changer with minimal maintenance requirements.

**COMPATIBLE**

Accommodating forks starting from 48”/1219 mm in length and 22”/558 mm in width the UTE is compatible with most standard pallet trucks.

**OFF-THE-SHELF**

The UTE’s versatility makes it perfect for operations looking for a quick “off-the-shelf” battery change.

**AFFORDABLE**

Adaptable and competitively priced for fleets of all types.

**AWARD WINNING**

Nominated as a finalist in innovation and deemed reader’s choice in 2022 the UTE’s adaptability is the new standard in industrial battery management.

**FULLY ELECTRIC**

Powered by the affixed host truck, this unit is entirely electric.

**WARRANTY**

Every unit comes with a standard 1-year warranty for your protection and a 5-year warranty on the electromagnet.



## KEY FEATURES + OPTIONS

- ✓ Custom colours available
- ✓ Fold-down battery guide for narrow batteries
- ✓ Front safety gate
- ✓ 10-pole electromagnet for batteries over 3,530 lbs
- ✓ Variable speed joystick
- ✓ Emergency stop controls
- ✓ Built-in lift of 12"/305 mm
- ✓ Forward/reverse and raise/lower controls by host truck
- ✓ Magnet bridge travel
- ✓ Magnet power on/off switch with 5-minute time out
- ✓ Linear actuators with 500 million millimeter lifecycle
- ✓ 5-year electromagnet warranty
- ✓ Add roller stands
- ✓ Add charger shelves



	<u>STANDARD</u>	<u>METRIC</u>
Unit capacity	5000 lbs	2268 kgs
Powerpack type	Gear reduced electric	
Motor type	Permanent magnet DC	
Horse power	1HP	
Unit voltage	24V	
Magnet size	6.5"/11.5"	152 x 292 mm
Magnet pole	8	
Standard colours	Orange & Blue	
Required host truck capacity	1801 lbs + battery	817 kgs + battery
Lift speed	0.033m/s	
Linear actuator lift cycle	500 million millimetres	
Magnet time-out	5-minutes	



8-pole electromagnet



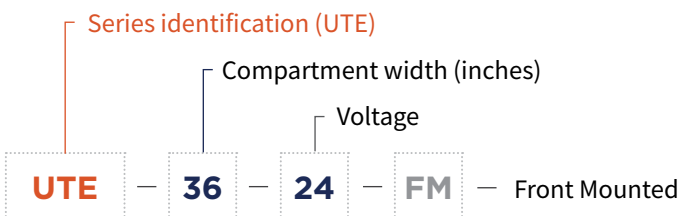
Emergency stop controls



Poly-urethane rollers

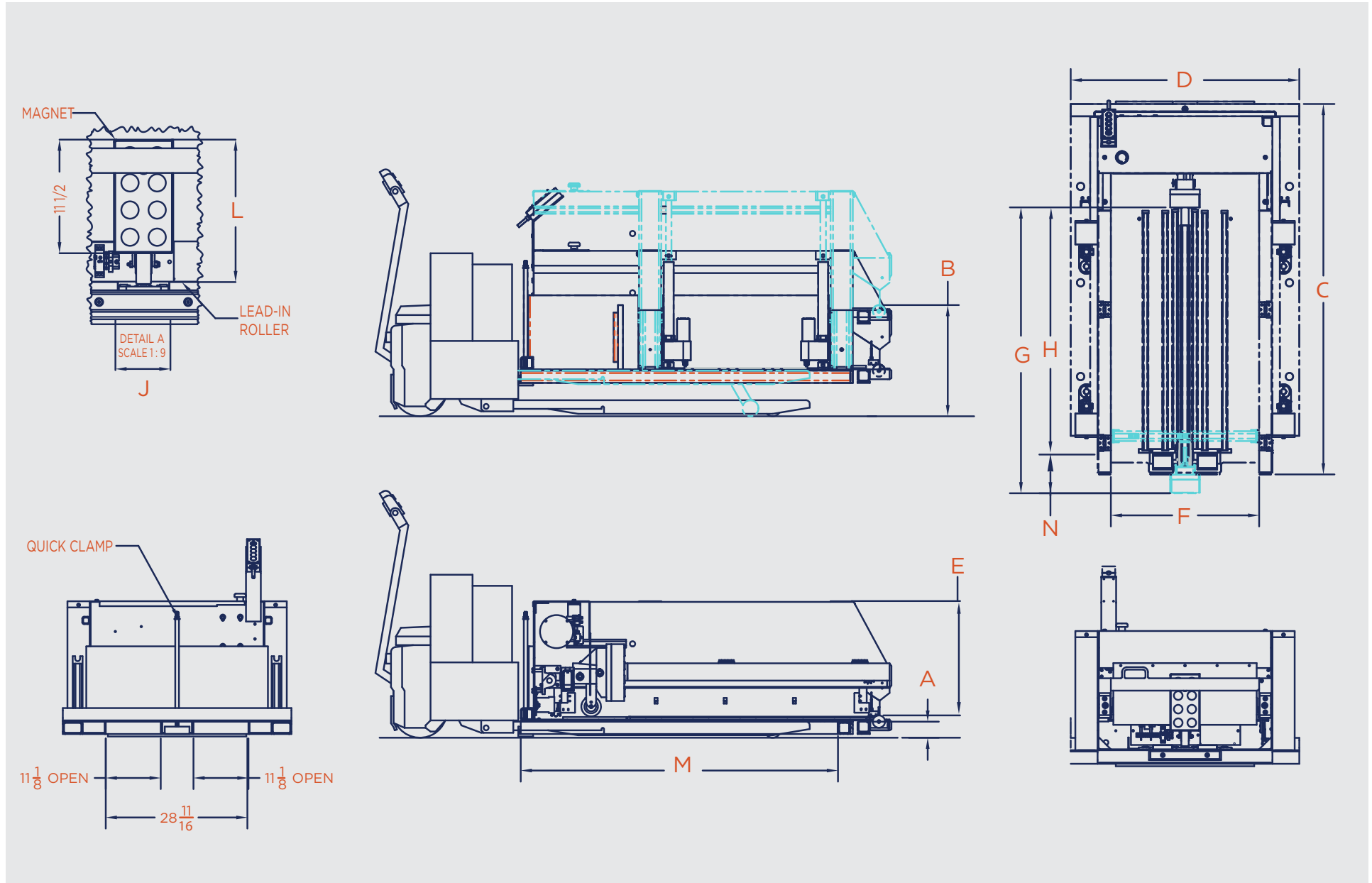
## MODEL-PART NUMBER BREAKDOWN

Example: UTE-36-24-FM



# DIMENSIONAL DATA

# UTE

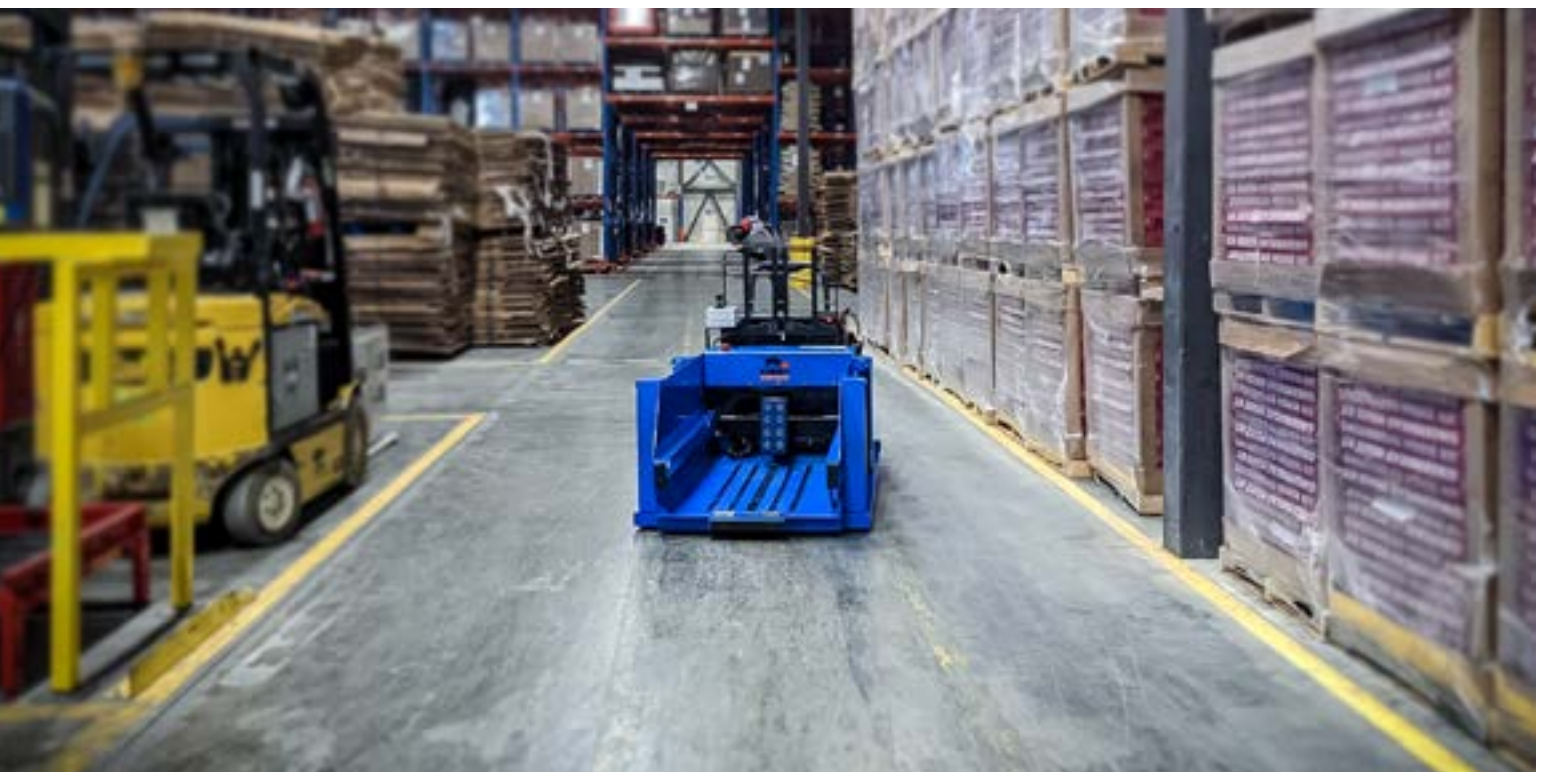


## DIMENSIONAL DATA

## STANDARD

## METRIC

<b>A</b>	Minimum roll-out height	Lowered pallet height +1.25"/32 mm	
<b>B</b>	Maximum roll-out height	Raised pallet height+12"/305 mm	
<b>C</b>	Overall length	75"	1905 mm
<b>D</b>	Overall width	52.25"	1327 mm
<b>E</b>	Overall height	37.63"	956 mm
<b>F</b>	Battery compartment width	36"	915 mm
<b>G</b>	Magnet travel	57.68"	1465 mm
<b>H</b>	Maximum battery length	49"	1245 mm
<b>I</b>	Maximum battery width	35"	889 mm
<b>J</b>	Minimum battery width	6"	152 mm
<b>K</b>	Maximum battery height	32"	813 mm
<b>L</b>	Minimum battery height	13"	331 mm
<b>M</b>	Minimum required forkpocket length	48"	1219 mm
<b>N</b>	Standard reach	5.5"	140 mm
<b>O</b>	Rated draw bar pull	1,800 lbs	818 kgs





# FABRICATING & AUTOMATION

Our specialized team of machinists create tools, parts, products, and attachments to solve everyday material handling dilemmas while our team of automation experts focus on robotic engineering, PLC and HMI programming and process automation geared towards your specific manufacturing needs. We deliver world-class expertise by innovating products that help you meet the demands of day-to-day operations.

Let's get started on your next project.



- ✓ Operational Up-time
- ✓ In-house Manufacturing
- ✓ Safety & Security
- ✓ Automated Battery Handling
- ✓ System Design
- ✓ And more!

[info@carneyautomation.com](mailto:info@carneyautomation.com)

[CARNEYAUTOMATION.COM](http://CARNEYAUTOMATION.COM)



- ✓ Product Transfer Systems
- ✓ Below-The-Hook Devices
- ✓ Storage Systems
- ✓ Ergonomic Equipment
- ✓ Forklift & Picker Attachments
- ✓ And more!

[info@carneyfabricating.com](mailto:info@carneyfabricating.com)

[CARNEYFABRICATING.COM](http://CARNEYFABRICATING.COM)



## HAVE ADDITIONAL QUESTIONS? GET IN TOUCH

---

[sales@carneybatteryhandling.com](mailto:sales@carneybatteryhandling.com)  
[www.carneybatteryhandling.com](http://www.carneybatteryhandling.com)

Tel: 1.905.564.0303  
Toll free: 1.866.THE.BULL

*Due to continuous product improvements, specifications are subject to change without notice. Some systems and features shown may be optional at extra cost.*

©2024 Carney Battery Handling Ltd.  
UTE\_specifications\_NA